

HY-6800HW

Barcode scanner

1D Red Light Wireless



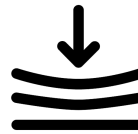
Features:



Red Light
Quick identification



Screen barcode
Various 1D barcodes

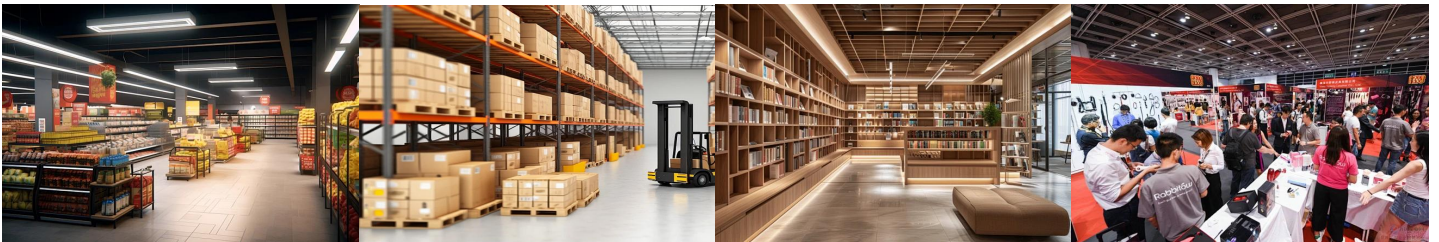


Drop-resistant
sturdy and durable



Plug and Play
USB connected device

Application: Warehousing, Logistics, Express delivery, Supermarkets, etc



HY-6800HW 1D Red Light Wireless

Parameter :

Performance Characteristics	
RF frequency	2.4G~2.483GHZ
Wireless distance	50M Spacious
Memory	4MB
Scanning method	Manual or continuous
Resolution	1500 dpi
Light Source	630nm±10nm
Scanning speed	300 times / sec
Scanning accuracy	≥4mil
Rotation, tilt, and yaw	360°,±55°,±55°
Decode Capability	
1D	EAN13, EAN-8, UPC-A, Code39, Code93, Code128, codabar(nw-7), ISSN,ISBN,GS1-Databar, GS1-128 Composite Code, Code 11, Industrial 25 ,MSI Plessey , etc,ITF-6,ITF-14, Rss, China Post, interleaved 2 of 5...
User Environment	
Operating Temperature	-20°C~+50°C
Storage Temperature	-40°C~+70°C
Humidity	0%~95% Relative humidity, non-condensing
Seismic resistance	Designed to withstand 1.5m(6) drops
Ambient Lighting	0~10000LUX
Decode Ranges	
4MIL	27- 60MM
5MIL	18-130MM
10MIL	10-320MM
20MIL	19-600MM
Physical Characteristics	
Dimensions	(L) 170mm* (W) 68mm* (H) 90mm
Weight	Scanner 135g Packing120g
battery capacity	1500mAh
Input Voltage, Operating Voltage	DC5V, DC3.3V
Operating Current, Standby Current	70MA, 10MA
Application scope	
Express Logistics Supermarket chain Manufacture An institution etc	

